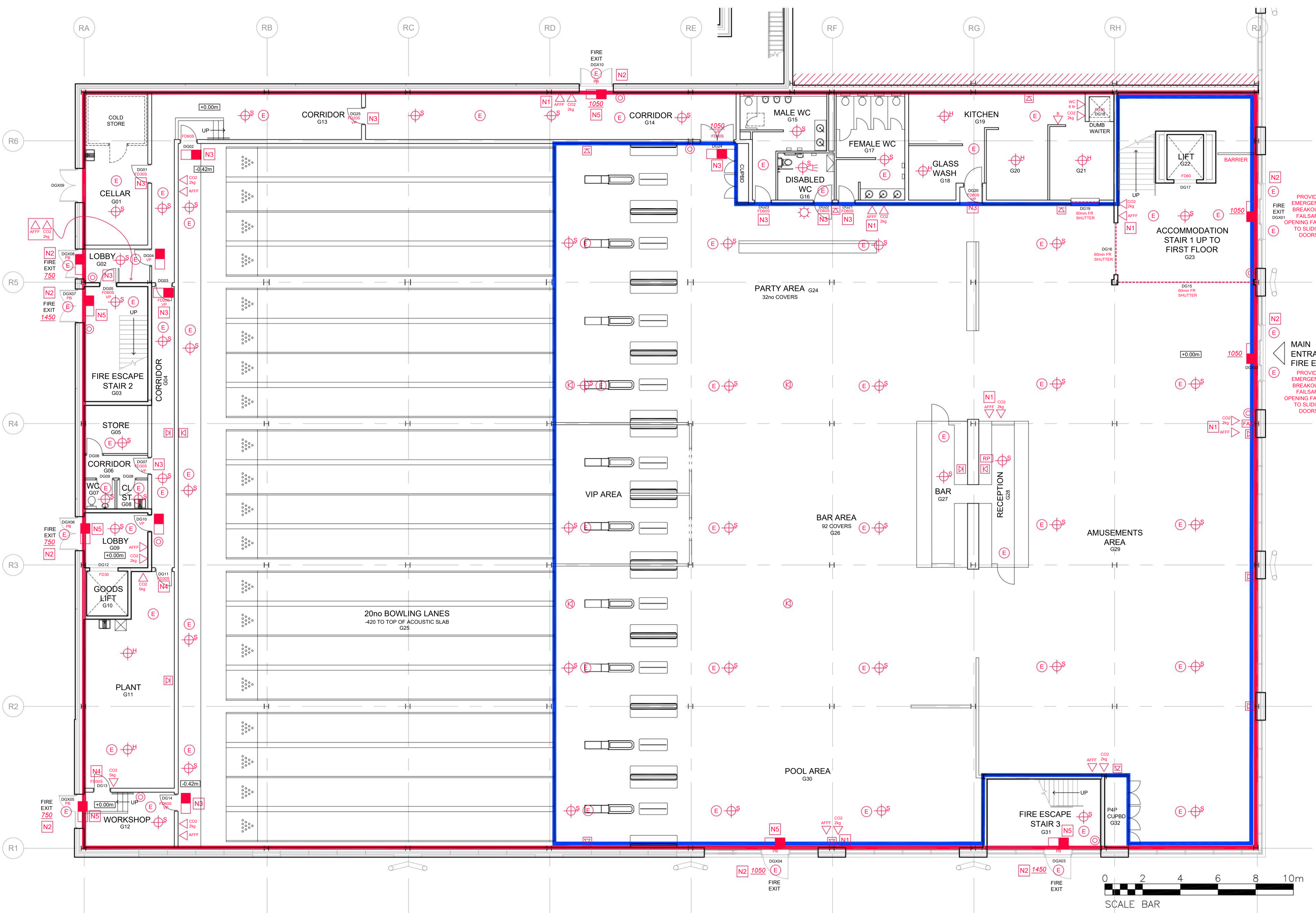
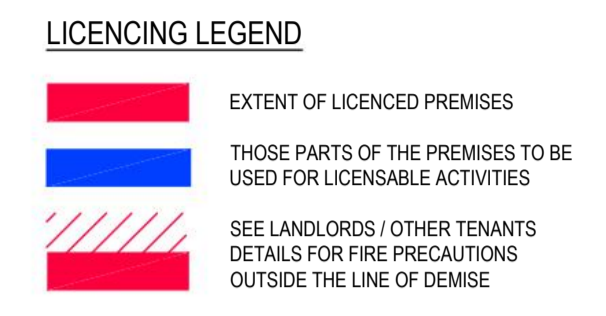


NOTES
 THE CONTRACTOR IS RESPONSIBLE FOR CHECKING ALL DIMENSIONS AND NOTIFYING ALL DISCREPANCIES TO THE DESIGNER.
 USE FIGURED DIMENSIONS IN PREFERENCE TO SCALED DIMENSIONS.
 ALL WORK TO BE IN ACCORDANCE WITH CURRENT BUILDING REGULATIONS.
 COPYRIGHT OF THIS DRAWING IS RESERVED BY G.I.A. LIMITED, AND IS ISSUED ON THE CONDITION THAT IT IS NOT COPIED, REPRODUCED OR DISCLOSED TO ANY THIRD PARTY EITHER WHOLLY OR IN PART WITHOUT THE CONSENT IN WRITING OF G.I.A. LIMITED.



MAIN ENTRANCE/
FIRE EXIT
 PROVIDE EMERGENCY BREAKOUT / FAILSAFE OPENING FACILITY TO SLIDING DOORS

PROVIDE EMERGENCY BREAKOUT / FAILSAFE OPENING FACILITY TO SLIDING DOORS

REV	DESCRIPTION	DATE
	AMENDMENTS	
	CLIENT	
	THE ORIGINAL BOWLING COMPANY	
	JOB	
	HOLLYWOOD BOWL COLCHESTER	
	DRAWING	
	GROUND FLOOR LICENSING PLAN	
	JOB NO.	DRAWING NO.
	2851-01	301
	SCALE	
	1:100 @ A1	
	DRAWN BY	DATE
	NAS	FEB 2023



G.I.A. LTD, 3 Foxglove Park, Common Road, Dunnington, York, YO19 5HZ.
 T 01904 481 480 F 01904 486 730 e design@gia.co.uk w www.gia.co.uk
 INCORPORATED IN ENGLAND REG. NO. 2781818

FIRE PLAN KEY

- FAP** Fire Alarm Panel
- RP** Repeat Fire Alarm Panel
- MC** Manual Call Point
- SD** Smoke Detector (7.5m spacing)
- HD** Heat Detector (6m spacing)
- SDS** Smoke Detector / Sounder / Beacon
- KS** Fire Alarm Sounder (wall mounted)
- KS** Fire Alarm Sounder (ceiling mounted)
- B** Beacon
- MES** Maintained Exit Sign
- DMES** Directional maintained exit sign
- E** 230 volt maintained emergency luminaire (lighting sub-contractor to design to illuminate escape routes at 1 lux and open areas at 0.5 lux) - this drawing shows approx design intent only
- FD30S** Fire Door, 30 minutes resistance with cold smoke seals and door closer
- FD60S** Fire Door, 60 minutes resistance with cold smoke seals and door closer
- PB** Door fitted with Push Bar and fitted with sign "PUSH BAR TO OPEN"
- VP** Door fitted with vision panel
- AFFF** 6 litre AFFF Foam Extinguisher, fixed to wall with handle 1.1m above FFL
- CO2 2kg** 2kg CO2 Extinguisher, fixed to wall with handle 1.1m above FFL
- CO2 5kg** 5kg CO2 Extinguisher, fixed to wall with handle 1.1m above FFL
- WC 6 ltr** 6 litre Wet Chemical Extinguisher, fixed to wall with handle 1.1m above FFL
- B** 1.2 x 1.2m Fire Blanket, fixed to wall with handle 1.1m above FFL
- N1** Fire Notice Sign
- N2** "FIRE EXIT - KEEP CLEAR" sign
- N3** "FIRE DOOR KEEP SHUT" sign
- N4** "FIRE DOOR LOCKED KEEP SHUT" sign
- N5** "PUSH BAR TO OPEN" sign
- 1450** Minimum clear width of door opening requirement

FIRE PLAN NOTES

- Smoke detection to be installed within all ceiling voids where void exceeds 800mm deep, to be accessible for testing - provide access panels as necessary to plasterboard ceilings
- Doors and partitions required to be fire resisting are to be in accordance with BS476, as amended
- Fire resisting doors required to resist the passage of smoke at ambient temperature conditions should, unless tested in accordance with BS476, section 31.1, 1983, be fitted with a smoke seal, intumescent strips and positive self closing device
- Fire alarm to comply with BS5839, part 1. Installing engineer to consult with Fire Authority
- Emergency lighting installation is to comply with BS5266, Part 1
- Installing engineer to refer to paragraph 3.1 of BS5266 part 1 in particular reference to consultation with Fire Authority
- Fire safety related signs and notices to conform to BS5499, part 1, (incorporating running man symbol on fire exits) and other pictograms as required
- Maintained illuminated "Fire Exit" signs required over all fire exits and to indicate escape routes are to conform to BS5499 part 1
- Fire fighting equipment to comply with BS EN3
- Upholstered seating furniture to satisfy as minimum standard ignition source 0 and Cib ignition source 5 as specified in BS5852, 2006, clause 11, methods of test assessment of the ignitability of upholstered seating by smouldering and flaming ignition sources
- Curtains and other textile hangings must be inherently flame retardant or be treated with a durable flame retardant. They must be capable of complying with the Type B performance requirements of BS5867, part 2, 1980 - specification for fabrics for curtains and drapes-flammability requirements
- Textile floor coverings should be tested to BS4790 (effects of small ignition source hot metal nut method). Vertically hung textiles should conform to BS5438
- Artificial foliage and other decorative effects are to be fire retardant to the satisfaction of the Fire Authority
- Wall and ceiling linings are to be class 1 surface spread of flame (as described in BS476, Part 7) in public areas. Class 0, in escape routes
- Test certificates should be provided in respect of Fire alarm, Emergency lighting, maintained exit signs, furniture and curtains etc
- All 60 minute fire resisting compartment walls to be provided with minimum of 40mm deflection heads to the tops of the walls at floor junctions

